

# FLAMENCA

## VILLAGE<sup>TM</sup>

51	PISCINA ADULTOS CLIMATIZADA / PISCINE CLIMATISÉE POUR ADULTES / HEATED ADULT'S POOL
52	PISCINA ADULTOS / PISCINE POUR ADULTES / ADULT'S POOL
54	GIMNASIO / GYM / GYM
57	ZONA DE TUMBONAS / ZONE DE CHAISES LONGUES / SUNBED
65	JUEGOS INFANTILES / JEUX D'ENFANTS / CHILDREN'S POOL
66	ENTRADA / ENTRÉE / ENTRANCE
67	ENTRADA APARCAMIENTO / ENTRÉE DE PARKING / PARKING ENTRANCE
72	ZONA VERDE PÚBLICA / ESPACE VERT PUBLIC / PUBLIC GREEN AREA
73	SAUNA / SAUNA / SAUNA
74	JACUZZIS CLIMATIZADOS / JACUZZI CHAUFFÉS / HEATED WHIRLPOOLS
75	ASEOS / TOILETTES / TOILETS
77	OFICINA TM / BUREAU TM / TM OFFICE
78	BUZONES / BOITE AUX LETTRES / MAILBOX
80	CHILL OUT / CHILL OUT / CHILL OUT
81	SALIDA APARCAMIENTO / SORTIE DE PARKING / PARKING EXIT
82	FUENTE / FOUNTAIN / FOUNTAIN
90	DUCHAS / DOUCHES / SHOWERS
96	PARKING EXTERIOR / EXTERIEUR PARKING / EXTERIOR PARKING
104	LOCALES COMERCIALES / LOCAL COMMERCIAL / BUSINESS PREMISES
117	JUEGOS INFANTILES DE AGUA / JEUX D'ENFANTS D'EAU / CHILDREN'S WATER PLAY AREA
118	PISCINA INFANTIL CLIMATIZADA / PISCINE D'ENFANTS CLIMATISÉE / HEATED CHILDREN'S POOL

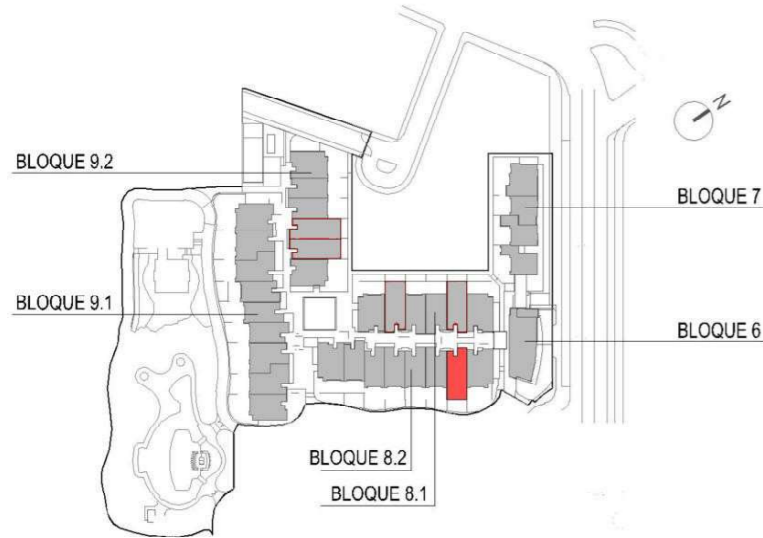


**Van Dam Estates**

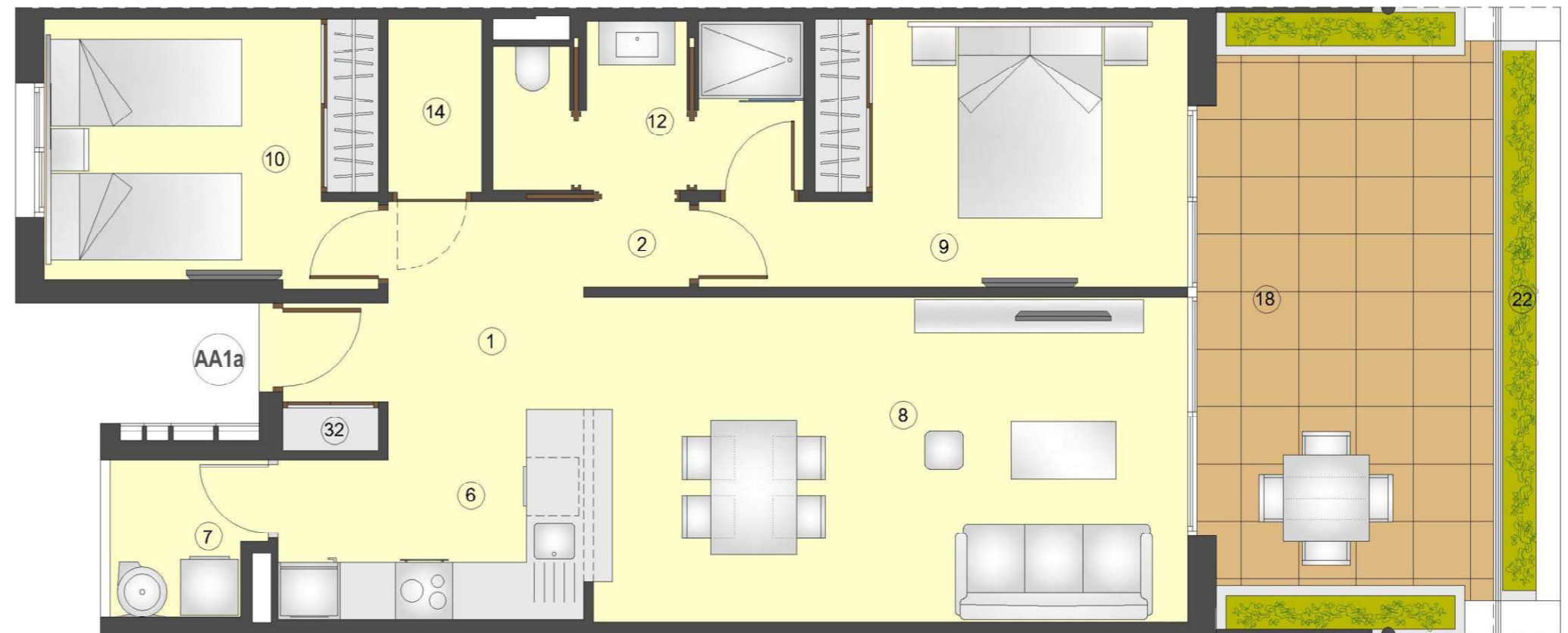
# FLAMENCA VILLAGE



## Van Dam Estates



nº	SUPERFICIES UTILES / FLOOR AREA / SURFACES UTILES	TIPO TYPE TYPE AA1a
1	VESTIBULO / HALL / ENTRÉ	3,86 m <sup>2</sup>
2	PASO 1 / CORRIDOR 1 / CIRCULATION 1	2,84 m <sup>2</sup>
6	COCINA / KITCHEN / CUISINE	6,44 m <sup>2</sup>
7	GALERÍA / GALLERY / GALLERIE	2,51 m <sup>2</sup>
8	SALÓN COMEDOR / LIVING-DINING ROOM / SALON-SALLE A MANGER	21,13 m <sup>2</sup>
9	DORMITORIO 1 / BEDROOM 1 / CHAMBRE 1	11,95 m <sup>2</sup>
10	DORMITORIO 2 / BEDROOM 2 / CHAMBRE 2	9,56 m <sup>2</sup>
12	BAÑO 1 / BATHROOM 1 / SALLE DE BAINS 1	5,23 m <sup>2</sup>
14	TRASTERO / STOREROOM / CAVE	1,76 m <sup>2</sup>
32	ZAPATERO / SHOE LOCKER / PLACARD À CHAUSSURES	0,50 m <sup>2</sup>
<b>TOTAL SUP. UTILES / TOTAL FLOOR AREA / TOTAL SURFACES UTILES</b>		<b>65,78 m<sup>2</sup></b>
<b>SUP CONSTRUIDA INTERIOR / BUILT INTERIOR AREA / SURFACE CONSTRUITE INTÉRIEUR</b>		<b>76,89 m<sup>2</sup></b>
18	SUP CONSTRUIDA TERRAZA / BUILT TERRACE AREA / SURFACE CONSTRUITE TERRASSE	19,00 m <sup>2</sup>
22	SUP.CONSTRUIDA TERRAZA DESCUBIERTA / BUILT OPEN TERRACE AREA / SURFACE CONSTRUITE TERRASSE NON COUVERTE	4,58 m <sup>2</sup>
<b>TOTAL SUP.CONSTRUIDA PRIVADA / TOTAL BUILT PRIVATE AREA / TOTAL SURFACE CONSTRUITE PRIVATIVE</b>		<b>100,47 m<sup>2</sup></b>



Apartamento, 2 Dormitorios + 1 Baño - Planta Primera  
 Apartment, 2 Bedrooms + 1 Bathroom - First Floor  
 Appartement, 2 Chambres + 1 Salle de bains - Premier étage